

Proform Software Upgrade v1.9.0 Release Notes

Click on the links below to learn more about the changes in this release.

Contents

- New Features in Proform Professional v.1.9.0
 - [Back to Lay Reports](#)
 - [Horse Watcher](#)
 - [Non Runner and Going Updates](#)
 - [Name Searches in System Builder](#)
 - [Non-Runner, Declaration and Results Notifications](#)
 - [Dam Sire](#)
 - [Sire/Dam Country of Breeding](#)
 - [Short Notes](#)
 - [Full Text Search](#)
 - [Backup and Restore](#)
 - [Owner Data](#)
 - [Sectional Timing Fields](#)
 - [Gelded First/Second Run](#)
 - [Presentation Screen in System Builder Re-Organised](#)
 - [New Fields Added to Exporter](#)
 - [System Builder Drilldown Field Order Changes](#)
 - [System Builder Drilldown Field Changes and Additions](#)
 - [New LTO Fields in Ratings Speed & User Tab](#)
 - [New Ratings Presentations](#)
 - [Enhanced Help](#)
 - [New System Builder Summary Fields](#)
 - [Impact Value Calculations in System Builder](#)
 - [Draw and Pace Stats Impact Calculations](#)
 - [Scope of Changes \(Data\)](#)
 - [Exact Distances](#)
 - [Original Number of Runners](#)
- Bug Fixes in Proform Professional v1.9.0
 - [History Field](#)
 - [System builder fields which contain quotes](#)
 - [In Running Percentage Calculation](#)
 - [Main Filters](#)
 - [Horse Sex](#)
 - [Graph View Error](#)
 - [Missing Race Classifications](#)
 - [Day of Week Bug](#)

New Features in Proform Professional v.1.9.0

Back to Lay Reports

The in-running (IR) module in Proform is a significant aid to anyone who has an interest in how a race develops IR or wants to see how a horse trades during their performances.

Using our horse racing software, you can research back to lays, lay to back scenarios and determine which horses will break slowly thus likely to trade higher in running at the beginning of a race.

The In Running Tab in System Builder contains various fields, which can be used to analyse In Running Prices.

Platinum members were able to take advantage of our automated in running reports on our web site and in this release you now have the ability to generate Back to Lay Reports (Flat/Jump) via the system builder.

Quick Days ☐ Current Month ☐ SKIP Welcome Screen Update ☐ Betfair Estimate

Ratings (Speed & User) | LTO Race | LTO Course | LTO Classifications | LTO Horse

Presentation | Presentations (Ratings) | System Results | Filter Results | Preferences

Date | Race | Course | Classifications | Horse | Breeding | Horse 2 | **In Running** | Ratings

In Running

Lowest In Running Prices

Lowest In Running Price: OR

% Lower Than Betfair SP:

Highest In Running Prices

Highest In Running Price: OR

Research Lowest In Running Prices

Research IR Low Odds:

Loop Research Odds (START):

Loop Increment: **RUN LOOP**

Loop Research Odds (END):

Reset In Running Parameters

Generate Back to Lay Reports using these buttons

Run Back 2 Lay Report (JUMPS) Run Back 2 Lay Report (FLAT) Filter All

In the coming weeks, we will produce a video of how to use this new feature however to generate your own Back to Lay reports following these steps

1. Select today's date in the Date Tab and select "Use HORSE decs"

Ratings (Speed & User) | **LTO Race** | **LTO Course** | **LTO Classifications** | **LTO Horse**

Date | Race | Course | Classifications | Horse | Breeding | Horse 2 | In Running | Ratings

Race Date Filter

☒ When ticked your system is enabled and qualifiers will be shown on the welcome screen

Restrict by years: 1997, 1998, 1999, 2000, 2001, 2002, 2003, 2004, 2005, 2006, 2007, 2008, 2009, 2010, 2011, 2012, 2013, 2014, 2015, 2016, 2017, 2018, 2019, 2020

Restrict by months: January, February, March, April, May, June, July, August, September, October, November, December

Restrict system to look at races from the past: Days

Restrict system to look at certain days of the month:

Restrict system to look at races on a set day of the week:

Restrict Searches to a Specific Day, Course or Race

Date to use for declaration filters below:

June 2016

Mon	Tue	Wed	Thu	Fri	Sat	Sun
30	31	1	2	3	4	5
6	7	8	9	10	11	12
13	14	15	16	17	18	19
20	21	22	23	24	25	26
27	28	29	30	1	2	3
4	5	6	7	8	9	10

Choose your Declaration Type:

- ☒ All Races
- ☐ Use HORSE decs
- ☐ Use JOCKEY'S shoes
- ☐ Use TRAINERS runners
- ☐ Use DAM decs
- ☐ Use SIRE decs
- ☐ Use Trainer/Jockey Combo

2. Choose a course

Races ☐ Only analyse a specific RACE from the date chosen above

Courses ☒ Only analyse a specific COURSE from the date chosen above

Windsor

3. Then on the in running tab set % lower than Betfair SP to ≥ 50 (or whatever percentage you require)

Quick Days: ☐ Current Month ☐ SKIP Welcome Screen Update ☐ Betfair Estimate

In Running

Lowest In Running Prices

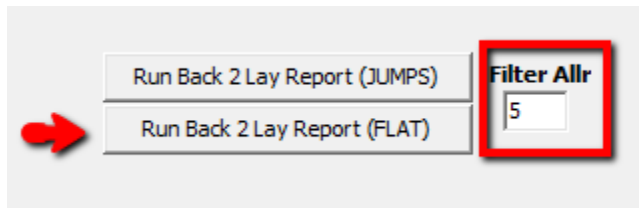
Lowest In Running Price: OR

Highest In Running Prices

Highest In Running Price: OR

% Lower Than Betfair SP: % Higher Than Betfair SP:

4. Then click on run Back 2 Lay Report (Flat) in this example. You can add in a filter for number of runs using the box (in this example 5)



5. The report will be generated similar to the one shown in the image below and you can see the equivalent report on the web site. The new report in the software adds the power rating rank if you have them imported into user rating 1 and also if you run it on a day where results are known you can see the actual percentage each horse went lower in running in the %DiffLOW column.

System Builder In Running Report

Time	Course	Race	Horse	Allr	Total Hit	Altx	Turf Hit	TurfX	AW Hit	AWx	PowR	%DiffLOW
20:30	Windsor	Turf	Darksiteofthemoon	5	5	100.00	2	100.00	3	100.00	12	0
21:00	Windsor	Turf	Adham	8	7	87.50	5	83.33	2	100.00	6	0
19:30	Windsor	Turf	Archangel Raphael	6	5	83.33	4	80.00	1	100.00	3	0
20:30	Windsor	Turf	Athollblair Boy	6	5	83.33	5	83.33		0.00	5	0
21:00	Windsor	Turf	Silken Skies	5	4	80.00	4	80.00		0.00	2	0
19:30	Windsor	Turf	Baadi	5	4	80.00	4	80.00		0.00	1	0
19:30	Windsor	Turf	Sparring	5	4	80.00	2	100.00	2	66.67	2	0
20:30	Windsor	Turf	Equistar	8	6	75.00	5	71.43	1	100.00	8	0
21:00	Windsor	Turf	Dheban	7	5	71.43	4	66.67	1	100.00	3	0
19:00	Windsor	Turf	Prendergast Hill	7	5	71.43	4	66.67	1	100.00	1	0
19:00	Windsor	Turf	Gold Sands	7	5	71.43	3	60.00	2	100.00	8	0
20:30	Windsor	Turf	Sir Roger Moore	7	5	71.43	2	50.00	3	100.00	6	0
20:30	Windsor	Turf	Highly Sprung	10	7	70.00	7	77.78		0.00	1	0

Web Site in running Report

Horse Lower Than 50% In Running on the Flat

Horse must have traded lower than the price in running on at least 5 occasions

Engagement	Horse	Traded	Wins	SR%	Flat Runs	% of Times Traded
(20:30 Wind)	Darksiteofthemoon	5	0	0	5	100
(21:00 Wind)	Adham	7	2	28.57	8	87.5
(16:45 Brig)	Last Star Falling	5	0	0	6	83.33
(20:30 Wind)	Athollblair Boy	5	1	20	6	83.33
(19:30 Wind)	Archangel Raphael	5	2	40	6	83.33

Horse Watcher

On the welcome screen the horse watcher list at the bottom will now display not just horses running today or tomorrow but also horses declared at the 48-hour stage if the 48hr decs are loaded into Proform.

The following horses are running today				d to be notified of this:	
Horse	Date	Time	Location	Day	Event
Le Bacardy	07/06/16	15:00	Fontwell	Today	First 4Cars Haslemere Land Rover Specialists Handicap Chase (Class E)
Bon Chic	07/06/16	20:35	Southwell	Today	Next PLC Handicap Hurdle (Class C)
Lady Of Longstone	07/06/16	20:35	Southwell	Today	Next PLC Handicap Hurdle (Class C)
Close Escape	07/06/16	20:05	Southwell	Today	New Steel Solutions Ltd 'National Hunt' Novices' Hurdle (Class E)
Mr Shantu	07/06/16	20:35	Southwell	Today	Next PLC Handicap Hurdle (Class C)

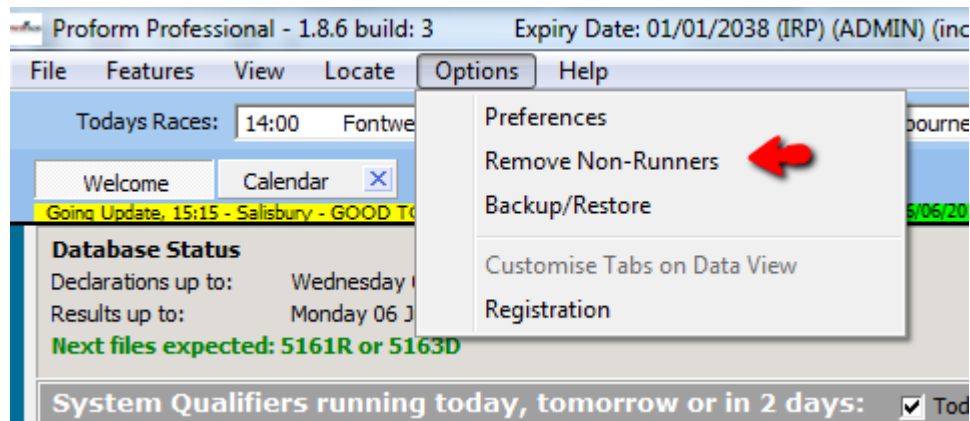
The watch list now includes declared at the 24 and 48 hour declaration stage

Non Runner and Going Updates.

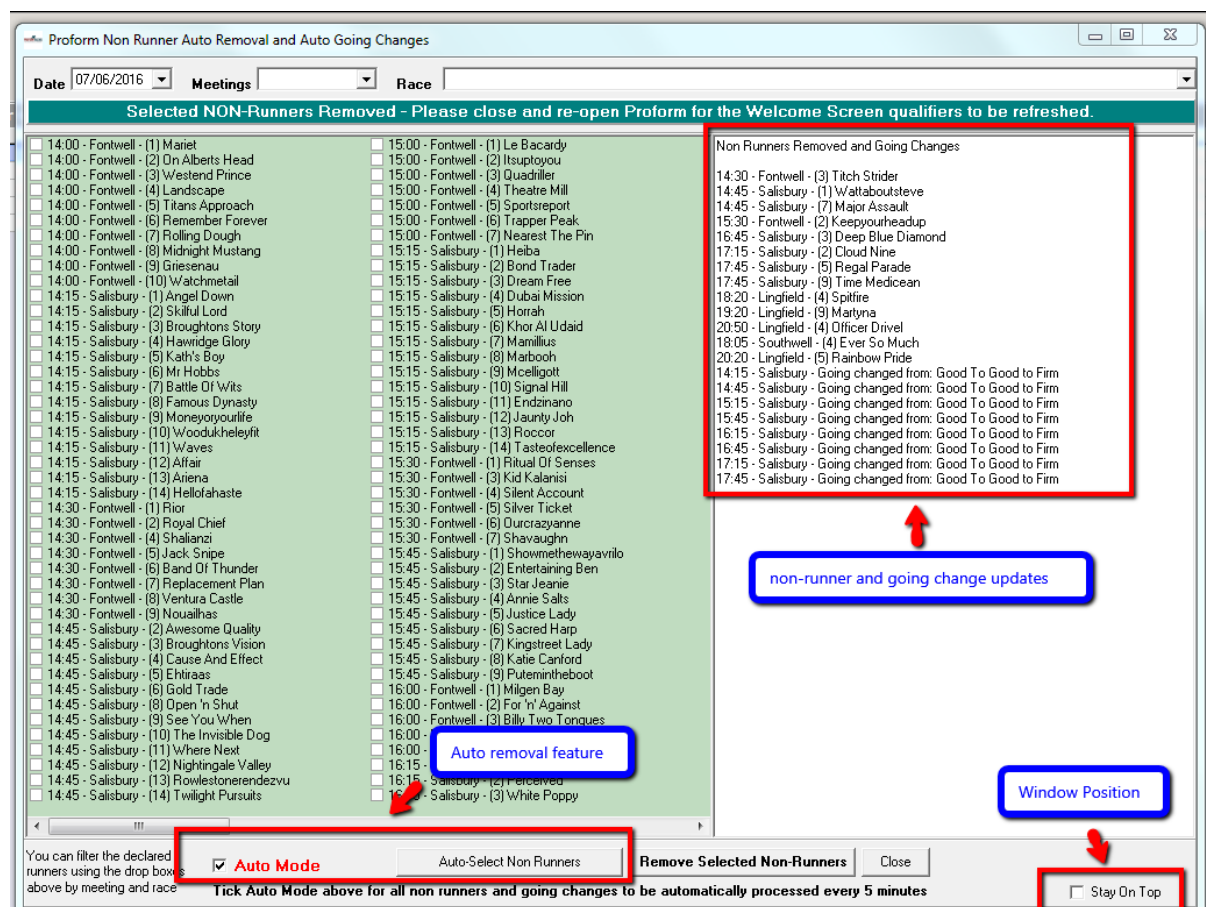
The non-runner tool allows you to manually or automatically remove non-runners and make going changes as they happen.

Previously this feature was a separate application but in this software release we have now re-integrated this tool back into the software. (The standalone tool will expire soon)

You can access the non-runner tool from the options menu



When the tool starts it looks like this




To manually remove a horse(s), select the date, meeting and race from the drop down menu, then tick the check box next to the horse's name then select the "Remove Selected Non-Runners" button.

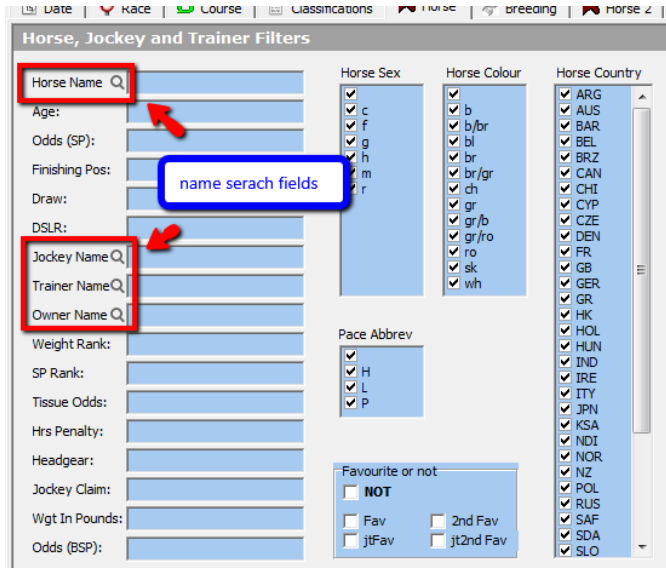
You can set up the non-runner tool to auto update every 5 minutes via the "Auto Mode" check box. Selecting this box will remove non-runners and change the going automatically.

If you don't want the tool to manage going updates and non-runners for you, you can close the non-runner tool or untick the auto box and it will then only remove runners when you decide.

You can change the behaviour of the window by selecting the "Stay on Top" checkmark in the bottom right corner.

Name Searches in System Builder

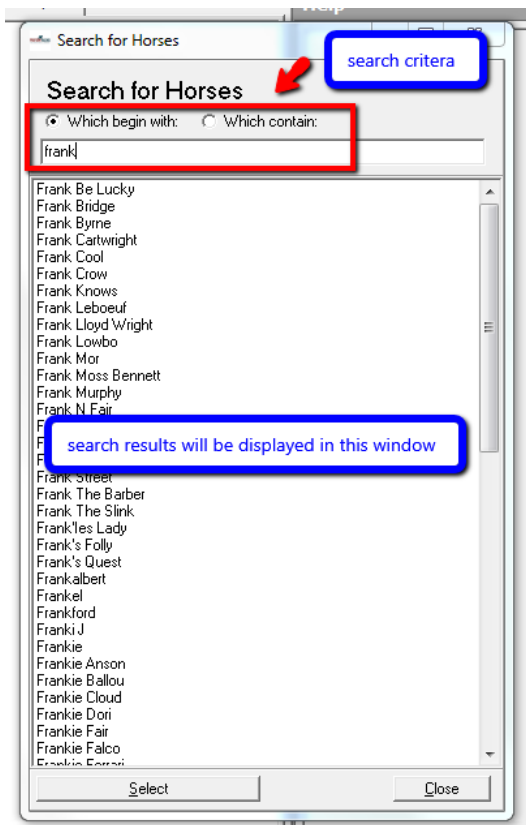
When creating a new system, it can be difficult to find the correct name you are looking for, therefore in this software release we have added a search facility for any field where you see a magnifying glass 



Name searches can be applied to the following fields in the system builder

- Horse, Trainer, Jockey, Dam, Sire, Damsire, Owner, LTO Trainer and LTO Jockey.

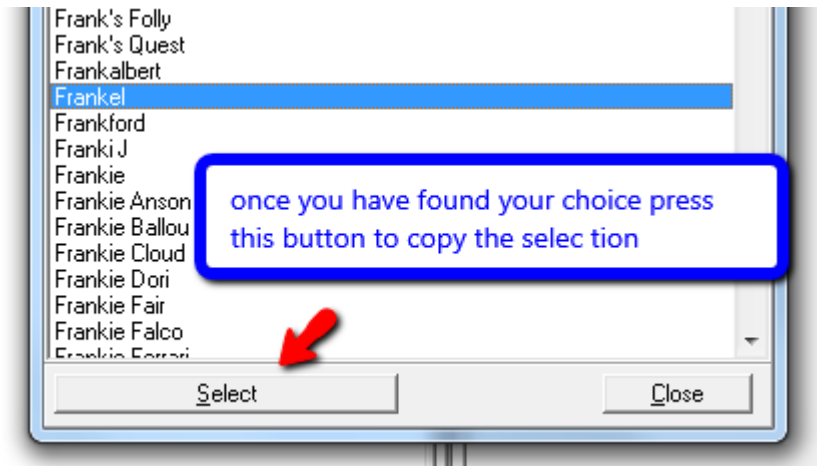
If you click on the magnifying glass icon, the following dialog box will appear



Similar to the full text search feature, you can search for items that begin with the letters you type or contain the letters you type by choosing the different option highlighted in the image above.

A full text search will start after you have typed at least 3 characters after which a list of all matches will be displayed.

If you find your match you can click it to select it and press select at the bottom and the relevant field back in the system builder will be filled in by your selection and the search screen will close.



Or you can double click the one you want and the screen will close and the field in the system builder field will be populated with your selection.

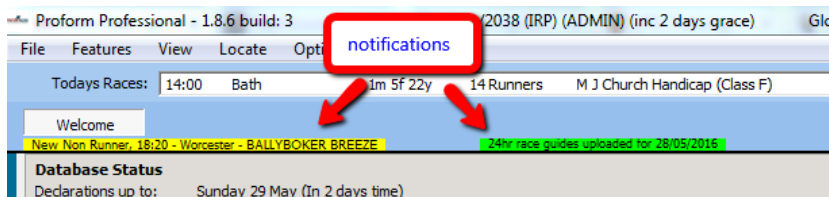
- **Note:** The screen is a dialog so you cannot use the rest of the software until you have either chosen a search result, pressed the close button or the 'x' in the top right hand corner of the dialog box.

Non-Runner, Declaration and Results Notifications

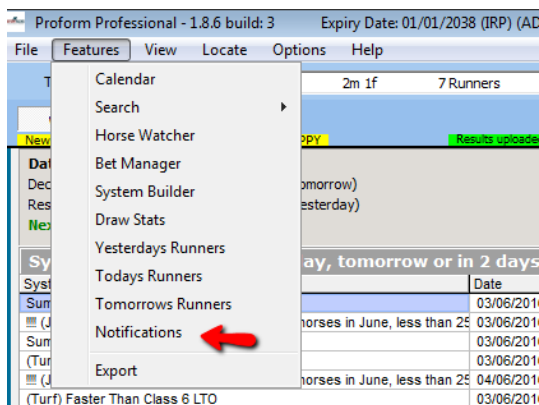
In this release we have added notifications:

- When the results are available for download into the software.
- For non-runners and official going changes.
- When the 24/48 hour declarations are available for download.
- When the race guides are available on our web site.
- When the power ratings are available for download into the software.

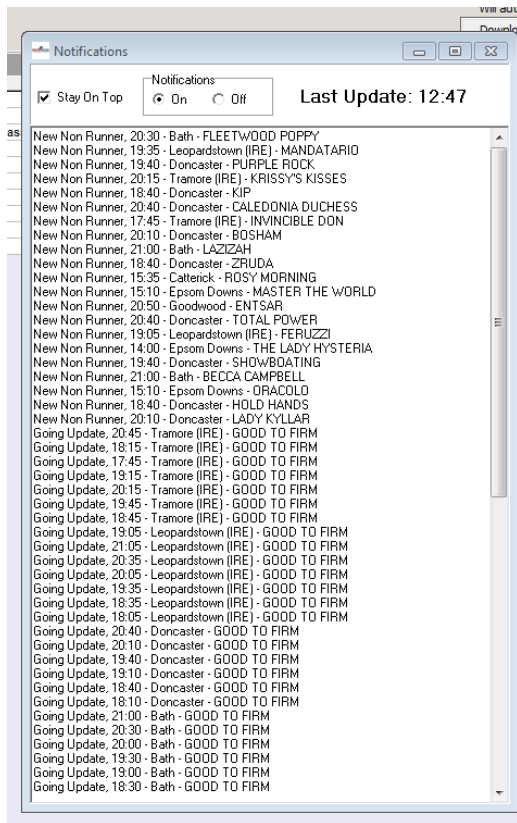
Every minute Proform checks for any new notifications which are displayed at the top of the software under the welcome screen has yellow and green labels. Yellow notifications are for non-runners and going changes, while green labels are for results, decs, race guide and power rating notifications.



You can click on the yellow or green status lines to open the notification screen and you can also open this screen from a new feature button from the main menu or from the menus on the left.



When opened, the notifications screen looks like this:



The notifications screen opens when you first open Proform. The window defaults to “Stay On Top” which you can alter on this screen however your choices are not saved so you will need to set your preference each time you open Proform.

If you untick stay on top and turn off notifications, then the window will not display but notifications will still be shown on the main screen in yellow and green etc. You can click either of the two notification labels to bring the notifications box back up again.

- **NOTE: Notifications don’t remove non-runners or change the going, you have to use the integrated non-runner tool to do this.**

Dam Sire

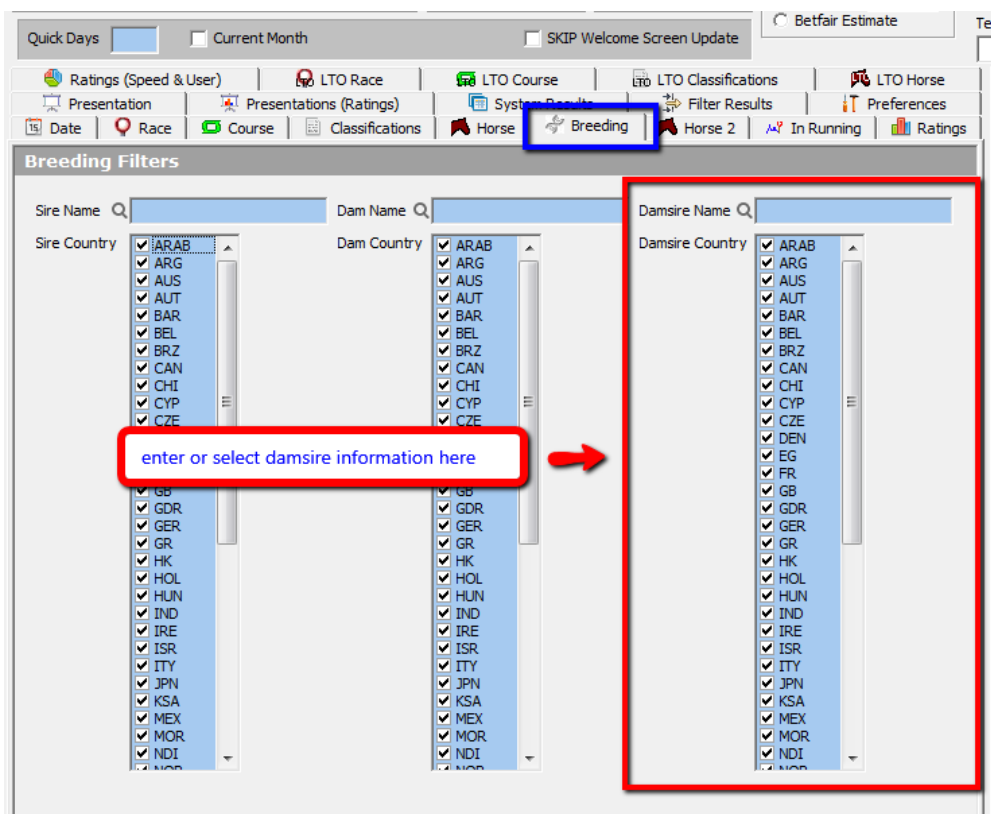
Through numerous breeding studies, we can determine a horse's preference for a particular going based on genetic traits passed to it through various ancestries and blood lines.

Breeding not only influences a horse's physical size and shape but also is a major factor on a horse's distance and going preferences plus a whole host of other factors related to the conditions of the race.

With this in mind in the new release we have enhanced the software to include the ability to query Dam Sires. This new feature can be found in a number of areas in the new release

System Builder Changes

A new tab has been added to the system builder called "Breeding".



The Dam Sire is the sire (father) of a dam (mother); equivalent to a maternal grandfather

In the previous release, the Sire and Dam search criteria were available under the "Horse" tab however in this release these fields have been consolidated under the "Breeding" tab.

The Dam Sire field(s) function exactly the same as the Sire and Dam fields within the system builder and this feature is reflected in the following changes:

- Presentation Tab.
- List of country of breeding choices in Breeding Tab
- Added country in brackets to next to Damsire name on the following screens
 - Racecards, Race Results, Horse Form, Prior Form and Post Form.
- Damsire is now a field in the exporter.
- Added Damsire to system builder preferences tab.

Form Book Changes

With the new release, you can now have the choice of seeing the horses Damsire in the following areas:

- Horse Form Tab.

For similar races: [W/U/R Favorites Won \(U.U.U.U.\)](#) [W/U/R Favorites \(U.U.U.U.\)](#)

⬆ ⬇ Buttons to move any tab to top or bottom area

Shortlists >> **Horse: Norfolk** **ROCK OF GIBRALTAR (2016/17)**

Date	Course	Damsire	Pos	Spd Ra
18/05/2016	Ayr	Rock Of Gibraltar (RE)	2	
30/04/2016	Doncaster	Rock Of Gibraltar (RE)	3	

Navigation bar: **Horse Form** | Prior Form | Race Notes | Horse Collateral | tv

- Prior Form Tab.

George Formby's Birthday (Plus 10) (Class D)

Date	Horse	Post	Damire	S	Rat	Course	Use
14/04/2016	Love Oasis	5	Piccolo (GB)		60	Newmarket	
18/04/2016	She's Rosanna	5	Rainbow Quest (US)		38	Windsor	
27/04/2016	Love Oasis	5	Piccolo (GB)		56	Wolverhampton	
3/04/2016	Northern Thunder	3	Rock Of Gibraltar (RE)		61	Doncaster	
05/05/2016	She's Rosanna	8	Rainbow Quest (USA)		52	Chester	
13/05/2016	Love Oasis	6	Piccolo (GB)		45	York	
19/05/2016	Gerrard's Return	4	Dark Angel (RE)		50	Ripon	
18/05/2016	She's Rosanna	UR	Rainbow Quest (USA)		0	Bath	
16/05/2016	Northern Thunder	2	Rock Of Gibraltar (RE)		66	Ayr	

Horse Form Prior Form Race Notes Horse Collateral SIR Running Horse

- Post Form Tab.

Selected Race: 20:05 01/04/15 Dundalk [176471]

☒ ALL ☐ Wfns ☐ Wfns/Elec ☒ TURF ☒ A/W ☒ CHASE ☒ HURDLES ☒ NHF ☒ ALL

☐ Race Card ☒ Post Form ☐ Trainer/Jockey Stats ☐ Trainer Trends ☐ Site Stats

www.dundalkstadium.com Handicap (Class F) (47-65) 176471

Spd Rat	Horse	Date	Course	Pos	Distance	Pace	Damsire
67	The Butche's Filly	29/01/2016	Dundalk	4	1m	H	Rock Of Gibraltar (IRE)
67	Cheers Buddy	16/10/2015	Dundalk	8	1m	P	Groom Dancer (USA)
67	The Butche's Filly	08/04/2016	Dundalk	1	1m	H	Rock Of Gibraltar (IRE)
66	Cheers Buddy	03/07/2015	Bellewstown	1	1m	H	Groom Dancer (USA)
66	Coach Bombay	04/08/2015	Cork	3	1m 4f	H	Dolphin Street (FR)
66	Share A Secret	19/08/2015	Kilmeary	7	1m 100y	H	Green Desert (USA)
64	Gold Tintum	24/04/2015	Kilbeggan	1	2m	P	Taufan (USA)
63	The Butche's Filly	22/01/2016	Dundalk	4	1m	H	Rock Of Gibraltar (IRE)
63	Coach Bombay	06/09/2015	Dundalk	1	1m	P	Dolphin Street (FR)
62	The Butche's Filly	12/07/2015	Dundalk	2	1m	H	Rock Of Gibraltar (IRE)
62	The Butche's Filly	18/05/2016	Dundalk	5	1m	H	Rock Of Gibraltar (IRE)
62	Hard Times	13/10/2015	Curragh	9	6f	H	Rainbow Quest (USA)
61	Cheers Buddy	30/06/2015	Hamilton	8	1m 65y	H	Groom Dancer (USA)
60	Too Many Diamonds	19/05/2015	Dundalk	5	1m	P	Spectrum (IRE)

- Race Card and Results Views.

Selected Race: 14:00 26/05/16 Haydock (191948)

ALL C Wins C Wins/Plcs ☒ TURF ☒ A/W ☒ CHASE ☒ HURDLES ☒ NHF ☒ ALL

Post Form Trainer/Jockey Stats Trainer Trends Sire Stats

Haydock (LH - Galloping) (Thursday 26 May 2016)

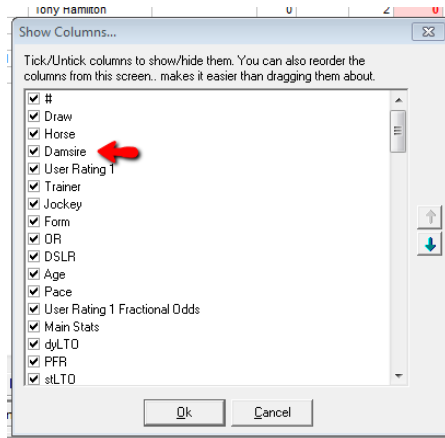
14:00 George Formby's Birthday Novice Auction Stakes (Plus 10) (Class D) (Class 4)

5f

Turf [New Class D / 4]

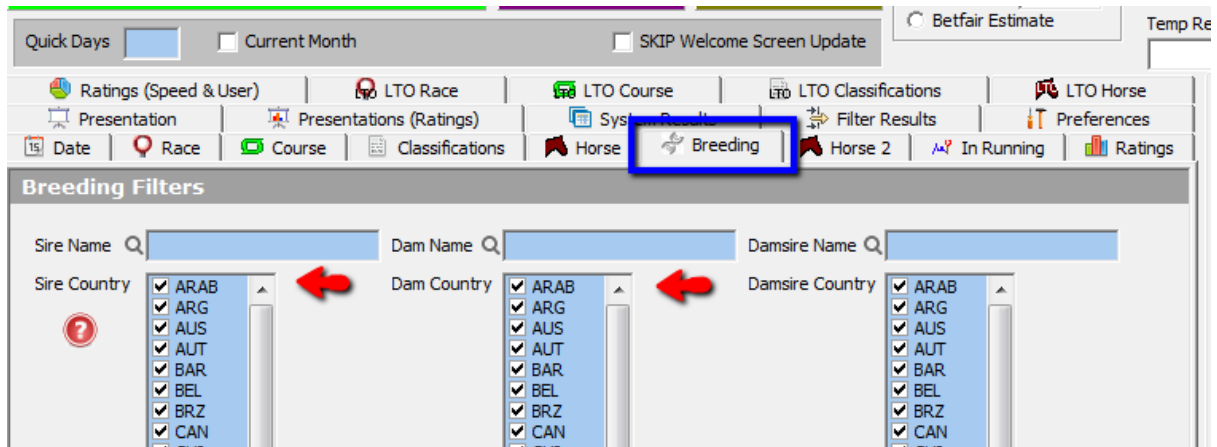
#	Draw	Horse	Damsire	User Rating 1	Trainer
4	5	Northern Thunder (IRE)	Rock Of Gibraltar (IRE)	482	Richard Hannon
7	7	Love Oasis	Piccolo (GB)	151	Mark Johnston
2	2	Gerrard's Return	Dark Angel (IRE)	117	Tom Dascombe
3	1	Major Cornwallis (IRE)	Oriente (USA)	108	Richard Fahey
1	8	Burrischole Abbey (IRE)	Xaar (GB)	80	K R Burke
6	4	Suitcase 'N' Taxi	Firebreak (GB)	78	Tim Easterby
8	6	She's Rosanna	Rainbow Quest (USA)	67	Steph Hollinshead
5	3	Plata O Plomo	So Factual (USA)	66	Tony Coyle

If the Damsire column is not shown in any of the tabs above you can select it by positioning your mouse over any of the column headings, then right click your mouse to display the “show fields” window per the image below



Sire/Dam Country of Breeding

With the addition of a new breeding tab we have consolidated Sire, Dam and Damsire information under one category. In this release we have also updated the following in respect to Sire and Dam related data:



Sire country of breeding

- Added a new presentation under the presentations tab
- Added a list of sire country of breeding choices on new breeding tab
- Added country in brackets to next to sire name on the following screens:
 - Racecards, Race Results, Horse Form, Prior Form and Post Form.
- Added sire to exporter fields.
- Added sire to system builder preferences tab.

Dam country of breeding

- Added a new presentation under the presentations tab.
- Added a list of dam country of breeding choices on new breeding tab
- Added country in brackets to next to dam name on the following screens:
 - Racecards, Race Results, Horse Form, Prior Form and Post Form.
- Added Dam to exporter fields
- Added to system builder preferences tab.

Short Notes

'Short Notes' are a new feature you can use to enter short notes (up to 500 characters) on each horse and is great for capturing post-race notes or observations on a per race basis.

They are displayed on the racecard/results view and on the horse form, prior form and post form screens. You can edit them direct by clicking the field twice on the racecard/results screen or on the horse form screen but not on the prior form or post form screens.

Selected Race: 13:50 25/06/16 Chester (193309)

☒ ALL ☐ Wins ☐ Wins/Plcs ☒ TURF ☒ A/W ☒ CHASE ☒ HURDLES ☒ NHF ☐ ALL

☒ Race Card ☐ Post Form ☒ Trainer/Jockey Stats ☐ Trainer Trends ☐ Sire Stats

Chester (LH - Sharp) (Saturday 25 Jun 2016)
13:50 Malibu Coconut Cup Maiden Stakes (Plus 10 Race) (Class D) (Class 4)
5f 16y
Turf [New Class D / 4]

You can add race notes on a per race basis

#	Draw	Horse	Short Notes	User Rating 1	Trainer	Jockey
8	8	Megan Lily (IRE)		368	Richard Fahey	Jack Garritty
7	4	Love Oasis		184	Mark Johnston	Franny Norton
4	7	Cajmere		163	Tom Dascombe	Richard Kingscote
3	2	Atteq		107	Richard Fahey	George Chaloner
5	6	The Nazca Lines (IRE)		80	John Quinn	Cameron Hardie
10	3	Tennessee Rose (IRE)		54	Tom Dascombe	Miss A Hesketh {5}
1	10	Albizu Campos		53	Lawrence Mullaney	Jason Hart
2	1	Arthurhedelegator		38	Oliver Greenall	Nathan Evans {5}
9	9	Rosabelle		38	Alan Bailey	David Probert
6	5	Three C'S (IRE)		30	David Dennis	John Egan

Short notes can be exported by the exporter and they have been added to the system builder drill down preferences screen.

Full Text Search

Full text search now available within of the trainer, jockey, horse and races search screens:

Search for Horses

Find all Horses

☒ Which begin with:
 ☐ Which contain:
 ☐ Full Text Search

Go

The feature is enabled by ticking the box on any of the four screens. The field defaults to off and currently does not save the tick status in preferences.

When full text search is ticked and you type three or more characters in the search box and the results will be found in the database and displayed.

This feature aids the search of horses, jockey's, races or trainers if you are unsure of the spelling of each name.

Search for Horses

Find all Horses

☐ Which begin with:
 ☒ Which contain:
 ☒ Full Text Search

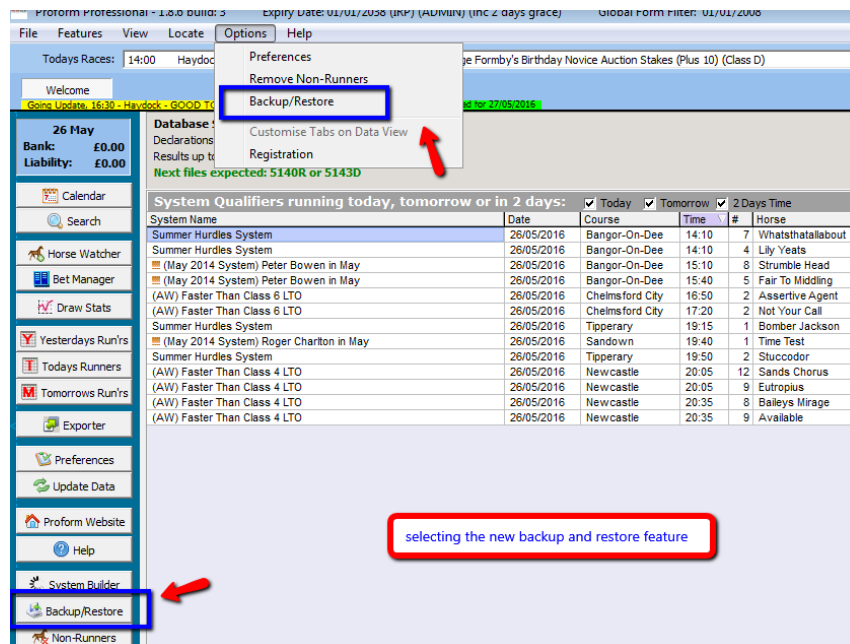
frank

after 3 or more characters are typed the first column will be populated with names that match the search criteria

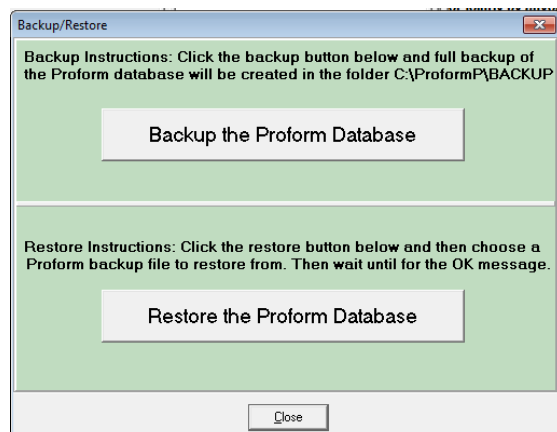
Horse	Age	T	StrikeRate			
You're likeme frank	7	F	11.63			
Wee Frankie	3	K	50.00			
To Be Frank	6	C	0.00			
The Name Is Frank	9	Mark Gillard	05/08/2014	3	78	3.85
Tapaidh Frankie	6	Simon West	12/04/2015	0	5	0.00
Super Frank	9	Zoe Davison	21/03/2012	7	60	11.67
Sir Frank Wappat	3	Mark Johnston	13/10/2010	3	14	21.43
Sir Frank Morgan	5	David Pipe	12/07/2015	6	31	19.35
Sir Frank	8	David Pipe	14/12/2013	5	18	27.78

Backup and Restore

In this release we have added a new backup and restore option which can be found from the options menu at the top or from the feature buttons down the side.



The backup feature looks like this



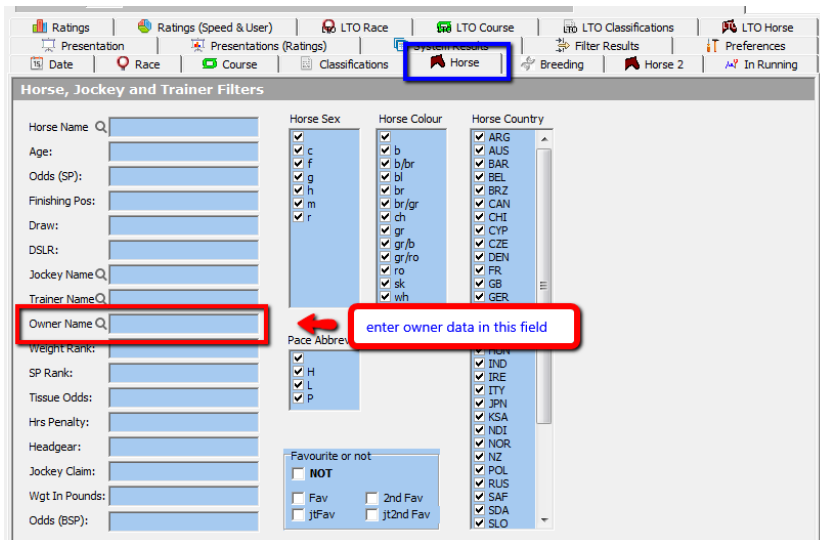
Clicking the backup button creates a full copy of the Proform database and stores it in the folder C:\ProformP\BACKUP\ and the backup file is called PRODB.bak


On clicking the restore button you are asked to choose the Proform backup file created using the backup tool above and then the software will restore that backup over your database replacing all the data so it is important that you are aware of the date of the backup you are restoring.

This tool is an excellent way of keeping your two copies of Proform up-to-date. i.e. Backup on one computer and then copy over the PRODB.bak file to another computer or memory stick and restore it on that computer.

Owner Data

In this release we have added the ability to query the system builder by the owner of the horse. This feature is available under the horse tab as shown in the image below:



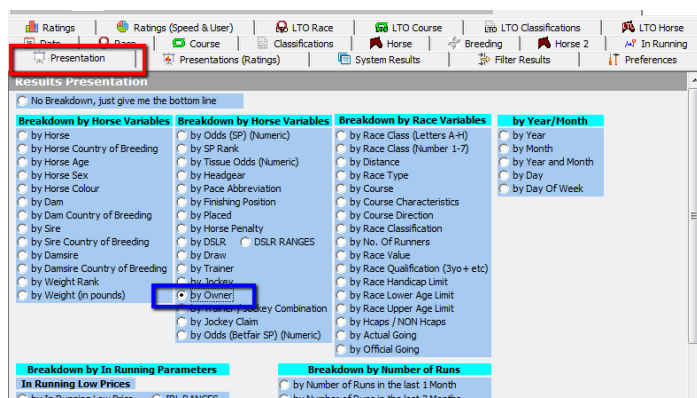
There will be a magnifying glass icon, like this  next to any field in system builder that you can perform a search on.

If you click on the magnifying glass you will see a new dialog pop up that will allow you to search for any characters in that name field or use wild cards i.e. “*” in the name

You can learn more about this feature under in the “Name Searches in System Builder” section of this document.

The ability to search, query and display owner data can be found in the following areas

- Presentation by owner added and also as a report to the full reports button.



- Owner added to horse form tab.

For similar races: 10/19 Favorites Won (52.11%) 1/19 2nd Favorites (5.21%) **Current**

Buttons to move any tab to top or bottom area ☐ Make first racecard column

Shortlists >> **Horse: Harome (289335)**

Date	Course	Damsire	Owner name	Pos
25/05/2016	Hamilton	Mark Of Esteem (IRE)	Mr R G Fell	
12/05/2016	York	Mark Of Esteem (IRE)	Mr R G Fell	
30/04/2016	Thirsk	Mark Of Esteem (IRE)	Mr R G Fell	

Horse Form Prior Form Race Notes Horse Collateral iVtsInRunning

- Owner added to prior form tab.

For similar races: 10/19 Favorites Won (52.11%) 1/19 2nd Favorites (5.21%) **Current**

Buttons to move any tab to top or bottom area ☐ Make first racecard column

Lockton Companies 50th Anniversary Novice Auction in Stakes (Class E)

Date	Horse	Owner	Damsire	Pos
25/03/2016	Merry Banter	Mr H Thornton	Bahamian Bounty (GB)	
11/04/2016	Merry Banter	Mr H Thornton	Bahamian Bounty (GB)	
30/04/2016	Harome	Mr R G Fell	Mark Of Esteem (IRE)	
03/05/2016	Merry Banter	Mr H Thornton	Bahamian Bounty (GB)	
12/05/2016	Harome	Mr R G Fell	Mark Of Esteem (IRE)	
14/05/2016	Bourbonisto	Mr Daniel Shapiro	Oasis Dream (GB)	
20/05/2016	Merry Banter	Mr H Thornton	Bahamian Bounty (GB)	
20/05/2016	Neigh Kid	Mrs Stef Keniry	Fumo Di Londra (IRE)	
23/05/2016	La Casa Tarifa	Kingsley Park 5	One Cool Cat (USA)	
25/05/2016	Bourbonisto	Mr Daniel Shapiro	Oasis Dream (GB)	
25/05/2016	Harome	Mr R G Fell	Mark Of Esteem (IRE)	
28/05/2016	Neigh Kid	Mrs Stef Keniry	Fumo Di Londra (IRE)	
31/05/2016	Miss Island Ruler	Nick Blencowe, John Guest, David B	Kodiac (GB)	

Horse Form Prior Form Race Notes Horse Collateral iVtsInRunning Full Colla

- Owner added to post form tab.

Selected Race: 15:55 02/06/15 Ripon (179054)

ALL Wins Wins/Plcs TURF A/W CHASE HU

Race Card Post Form Trainer/Jockey Stats Trainer Trends

Weatherbys Hamilton Handicap (Class C) 179054

Spd Rat	Horse	Owner	Date
76	Haaf A Sixpence	Melody Racing	31/10/2015
76	Birdman	Ebor Racing Club Iv	02/07/2015
75	Birdman	Ebor Racing Club Iv	11/07/2015
75	Off Art	Mr D B & Mrs C Lamplough	10/09/2015
74	Birdman	Ebor Racing Club Iv	20/08/2015
74	Birdman	Ebor Racing Club Iv	10/06/2015
74	Birdman	Ebor Racing Club Iv	30/05/2016
72	Instant Attraction	United We Stand	30/04/2016
72	Haaf A Sixpence	Melody Racing	19/09/2015
71	Instant Attraction	United We Stand	11/07/2015
71	Dubai Dynamo	The Bottom Liners	24/09/2015
70	Birdman	Ebor Racing Club Iv	12/09/2015
70	Dubai Dynamo	The Bottom Liners	31/08/2015
70	Instant Attraction	United We Stand	31/08/2015
69	Instant Attraction	United We Stand	20/07/2015
69	Johnny Cavagin	Mr A Bell	03/07/2015
69	Johnny Cavagin	Mr A Bell	24/09/2015
69	Instant Attraction	United We Stand	19/09/2015

- Owner added to race card and results views.

Selected Race: 14:00 02/06/16 Hamilton (192250)

ALL C Wins Wins/Plcs TURF A/W CHASE HURDLES NHF ALL

Race Card [X] Post Form [X] Trainer/Jockey Stats [X] Trainer Trends [X] Sire Stats [X]

Hamilton (RH - Undulating) (Thursday 02 Jun 2016)

14:00 Lockton Companies 50th Anniversary Novice Auction Stakes (Class E) (Class 5)

5f 7y

Turf [New Class E / 5]

#	Draw	Horse	Owner	Damsire
2	3	Merry Banter	Mr H Thornton	Bahamian Bounty (GB)
6	5	La Casa Tarifa (IRE)	Kingsley Park S	One Cool Cat (USA)
1	6	Harome (IRE)	Mr R G Fell	Mark Of Esteem (IRE)
7	1	Neigh Kid	Mrs Stef Keniry	Fumo Di Londra (IRE)
4	2	Inglorious	Weldspec Glasgow Limited	Nomination (GB)
3	7	Bourbonisto	Mr Daniel Shapiro	Oasis Dream (GB)
5	4	Miss Island Ruler	Nick Blencowe, John Guest, David Botteri	Kodiac (GB)

- Owner added to system builder preferences tab.

Quick Days [X] Current Month [X] SKIP Welcome Screen Update [X] Betfair Estimate [X] Temp Report Nam [X]

Ratings [X] Ratings (Speed & User) [X] LTO Race [X] LTO Course [X] LTO Classifications [X] LTO Horse [X]

Date [X] Race [X] Course [X] Classifications [X] Horse [X] Breeding [X] Filter Results [X]

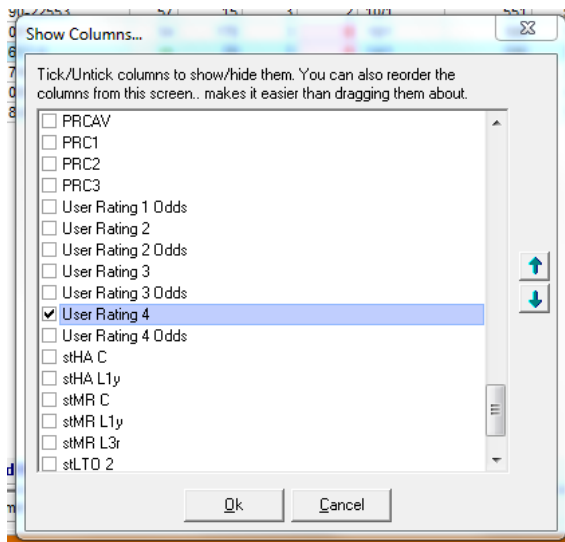
Presentation [X] Presentations (Ratings) [X] System Results [X] Preferences [X]

Choose the variables you wish to see on drill down queries

The fields from Date to Horse Sex are static fields in the drill down results

Distance To Winner LTO	Distance in lengths back to winner LTO
Comments In Running	Comments In Running
stHA C Rank	Static Speed Figures - Highest Achieved Career Rank
stHA L1Y Rank	Static Speed Figures - Highest Achieved Last 1 Year Rank
stMR C Rank	Static Speed Figures - Highest Achieved Last 1 Year Rank
stMR L1Y Rank	Static Speed Figures - Median Career Rank
stMR L3R Rank	Static Speed Figures - Median Career Rank
stLTO Rank	Static Speed Figures - Median Last 1 Year Rank
stLTO 2 Rank	Static Speed Figures - Median Last 1 Year Rank
stLTO 3 Rank	Static Speed Figures - Median Last 3 Runs Rank
stLTO 4 Rank	Static Speed Figures - Last Time Out Rank
LTO Trainer	Static Speed Figures - Last Time Out Rank
Day Of The Week	Static Speed Figures - 2nd Last Time Out Rank
Short Notes	Static Speed Figures - 3rd Last Time Out Rank
	Static Speed Figures - 4th Last Time Out Rank
	Static Speed Figures - 4th Last Time Out Rank
	Last time out Trainer
	Day Of The Week
	Owner
	Damsire
	Sire Bred
	Dam Bred
	Damsire Bred
	Short Notes

If you can't see user rating 4 in the same position as above, then right click on the heading line of the grid and click on show fields. From the dialog box which appears scroll down and find user rating 4 and move it using the arrows to position required.



How do I see the figures in horse form and prior form?

In the new version of Proform, once the Timeform figures are imported, customers can view User rating 4 (finishing speed %) in the horse form and prior form screens

Date	First Title	Pos	User Rating 3	Speed Rat	HIR_UserRating40	Course	Dist
28/12/2015	Multitask	6	29	47	110.44	Lingfield	6f
30/12/2014	Snow King	4		53	109.68	Lingfield	1m
07/01/2015	Multitask	1		66	107.46	Lingfield	6f
13/11/2014	Multitask	1		66	107.28	Kempton	7f
13/12/2014	Secret Witness	7		61	107.15	Wolverhampton	5f
28/05/2014	Multitask	3	1	62	106.75	Kempton	7f
04/01/2016	Tasaaboq	2	14	58	106.54	Wolverhampton	7f
14/11/2014	Multitask	4		67	106.53	Lingfield	6f
13/02/2016	Multitask	6	10	62	106.46	Lingfield	6f
07/08/2015	Snow King	5	6	53	106.30	Lingfield	6f
28/05/2014	Fossa	5		58	106.22	Kempton	1m
22/11/2014	Captain Kendall	8		55	106.02	Lingfield	6f
30/01/2016	Secret Witness	7	8	56	105.91	Lingfield	6f
08/12/2014	Multitask	4	1	61	105.59	Kempton	6f
14/11/2014	Blue Bounty	3	1	63	105.51	Lingfield	6f
27/08/2014	Multitask	8	1	51	105.28	Lingfield	7f

You can also now use the system builder to query last time out user ratings 3 and 4 and our speed figure LTO. This will allow to deeply query finishing speed %, upgrade figures and our speed ratings.

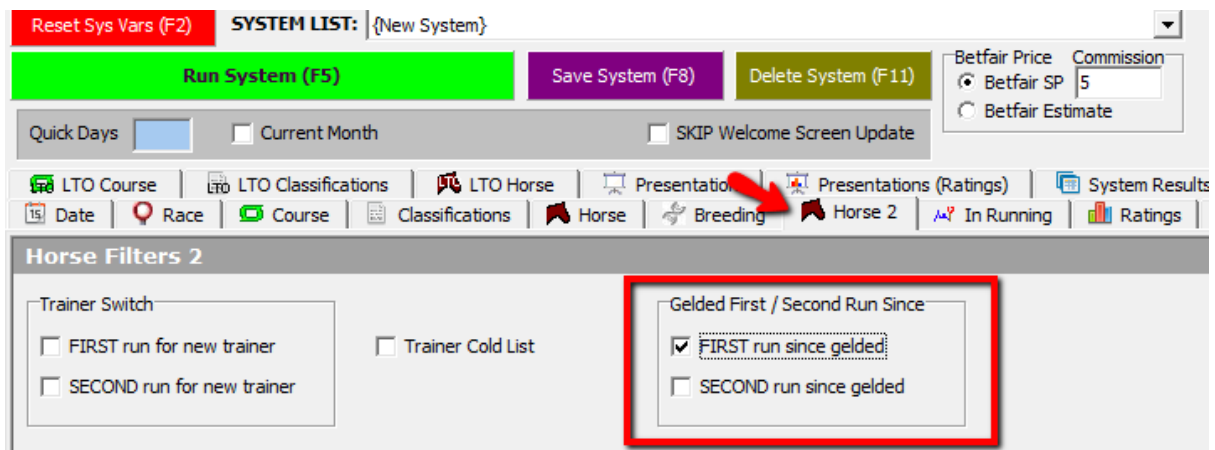
Gelded First/Second Run

A gelding is a castrated horse.

Castration, as well as the elimination of hormonally driven behaviour associated with a stallion, allows a male horse to be calmer and better-behaved, making the animal quieter, gentler and potentially more suitable for racing.

You often hear that a Gelding operation can improve a horse's performance, especially on its first run after the operation therefore, to enable you to determine if this change can be considered positive or negative under different race conditions, we have included a feature in the system builder to enable you to filter your research by 1st and 2nd run since the horse has been gelded.

The feature can be found on the Horse 2 tab in the system builder



The screenshot displays the Proform software interface. At the top, there's a 'SYSTEM LIST: {New System}' dropdown. Below it are buttons for 'Run System (F5)', 'Save System (F8)', and 'Delete System (F11)'. To the right, there's a 'Betfair Price' section with 'Betfair SP' selected and a 'Commission' field set to '5'. Below these are 'Quick Days' and 'Current Month' checkboxes, and a 'SKIP Welcome Screen Update' checkbox. The main navigation bar includes tabs for 'LTO Course', 'LTO Classifications', 'LTO Horse', 'Presentation', 'Presentations (Ratings)', and 'System Results'. Below this is a secondary navigation bar with 'Date', 'Race', 'Course', 'Classifications', 'Horse', 'Breeding', 'Horse 2', 'In Running', and 'Ratings'. The 'Horse 2' tab is selected. The 'Horse Filters 2' section is visible, containing a 'Trainer Switch' box with 'FIRST run for new trainer' and 'SECOND run for new trainer' checkboxes, and a 'Trainer Cold List' checkbox. A red box highlights the 'Gelded First / Second Run Since' section, which has 'FIRST run since gelded' checked and 'SECOND run since gelded' unchecked. A red arrow points to the 'Horse 2' tab in the navigation bar.

Depending on your area of research, select the appropriate check mark and other fields in the system builder then execute to see the results.

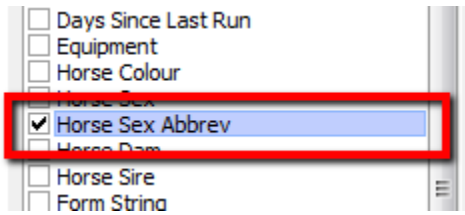
Presentation Screen in System Builder Re-Organised

To make way for new presentations for owner and breeding fields in this release, we have re-organise the presentation screen as per the image below.

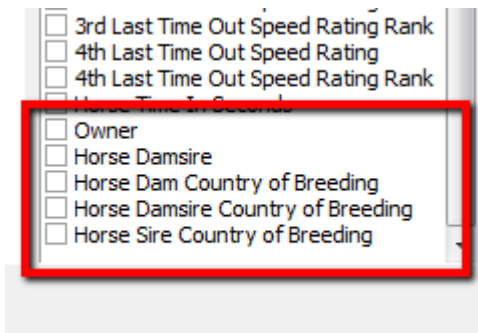


New fields added to Exporter

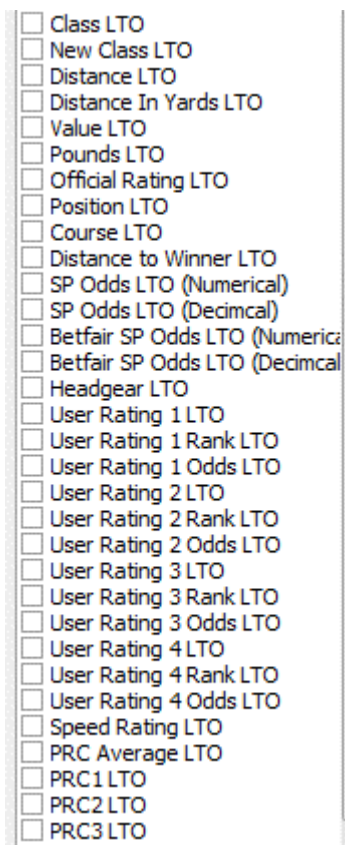
The Horse Sex Abbrev field has been added to the Exporter which reflects the correct sex of the horse on the date of the race exported.



We have also added export fields for Owner, Damsire, Dam, Damsire Country of Breeding and Sire Country of Breeding

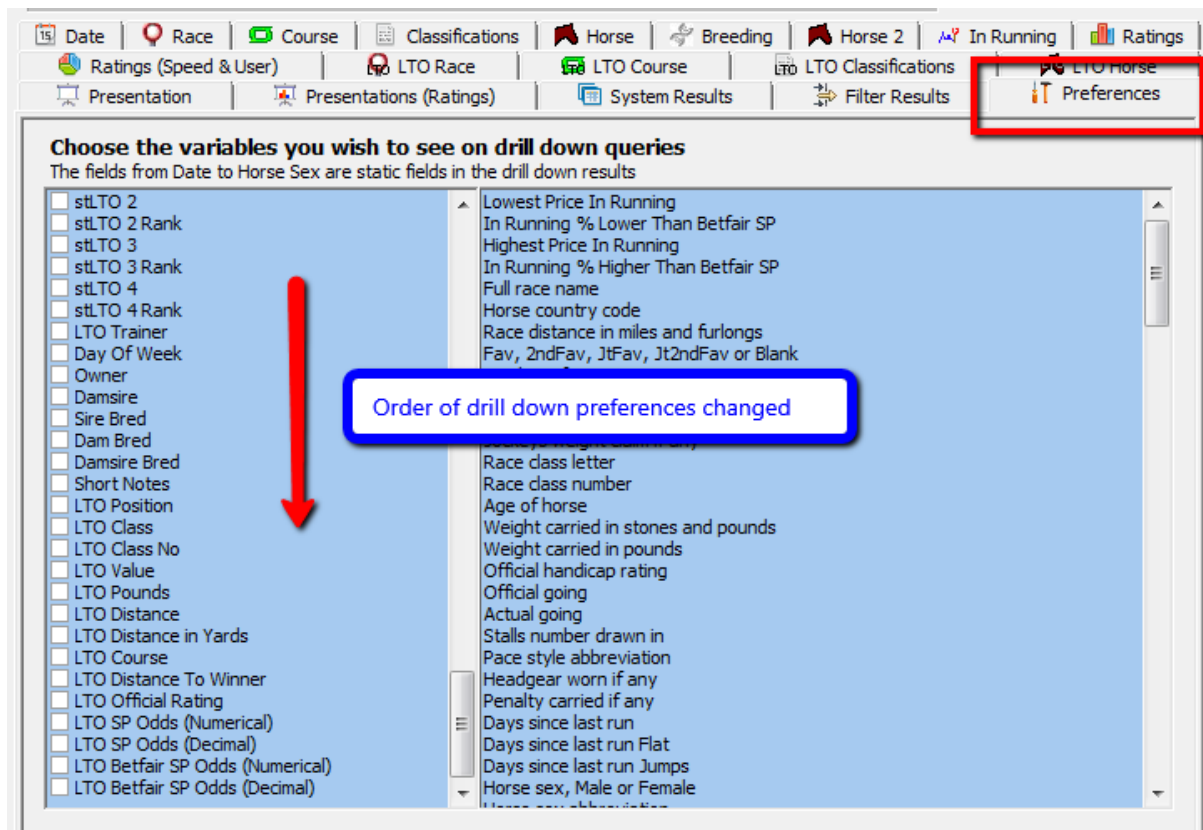


And finally we have added the following list of fields to the exporter, which are actual LTO variables regardless of race type.



System Builder Drilldown Field Order Changes

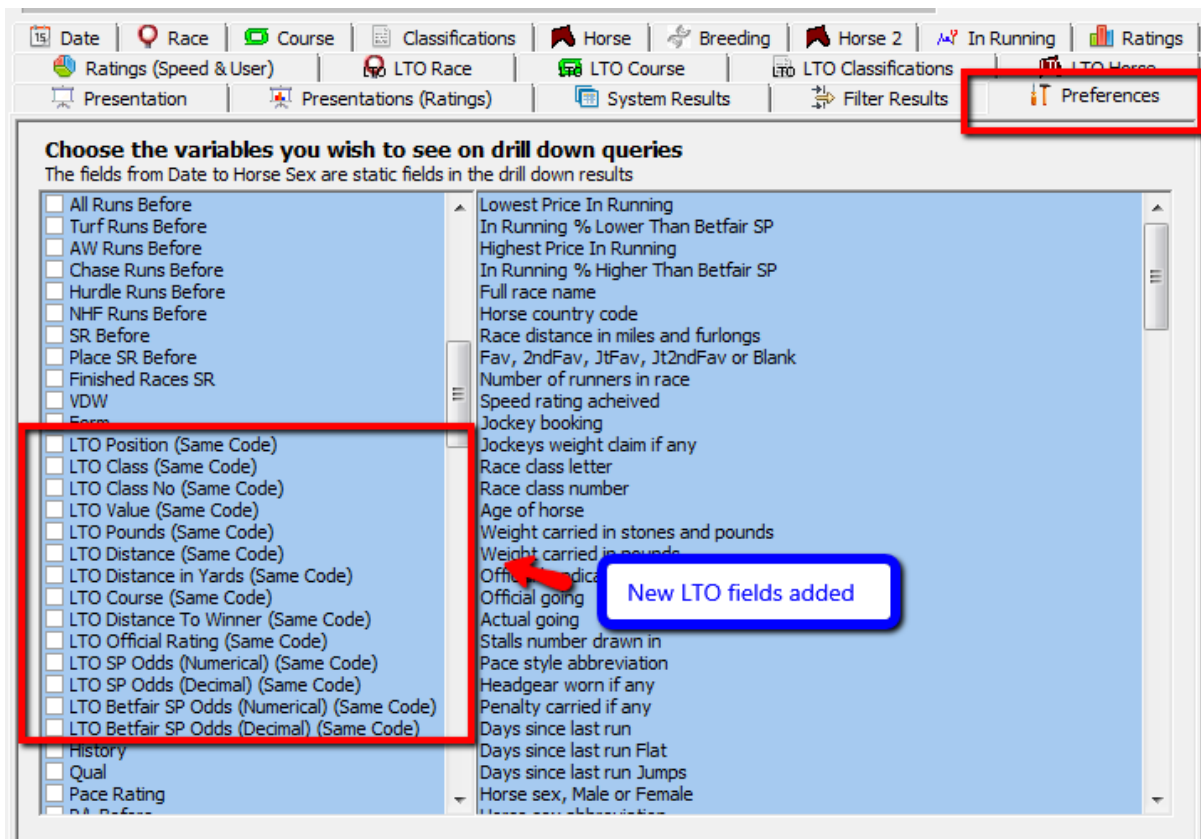
The order of the fields in the system builder preferences tab for drilling down as changed.



- NOTE: Because the ticks are remembered and saved in preferences your remembered ticks will now be out of sync, therefore in this release please review your ticked selection preferences and correct as required.

System Builder Drilldown Field Changes and Additions

The LTO fields are and have always been same code fields so we have now updated the description text in the preferences screen to reflect this and moved them all together in one block.



In this release we have also add the following extra LTO same code fields in the preferences tab:

- Distance in Yards LTO.
- Official Ratings LTO.
- SP Odds LTO (Numerical).
- SP Odds LTO (Decimal).
- Betfair SP Odds LTO (Numerical).
- Betfair SP Odds LTO (Decimal).

We have also added the following new fields: -

- Owner.
- Damsire.
- Sire Breeding Country.
- Dam Breeding Country.
- Damsire Breeding Country.
- Short Notes.

We have also added all the same LTO fields but for actual LTO run.

- LTO Position.
- LTO Class.
- LTO Class No.
- LTO Value.
- LTO Pounds.
- LTO Distance.
- LTO Distance in Yards.
- LTO Course.
- LTO Distance To Winner.
- LTO Official Rating.
- LTO SP Odds (Numerical).
- LTO SP Odds (Decimal).
- LTO Betfair SP Odds (Numerical).
- LTO Betfair SP Odds (Decimal).
- LTO Headgear
- LTO User Rating 1
- LTO User Rating 1 Rank
- LTO User Rating 1 Odds
- LTO User Rating 2
- LTO User Rating 2 Rank
- LTO User Rating 2 Odds
- LTO User Rating 3
- LTO User Rating 3 Rank
- LTO User Rating 3 Odds
- LTO User Rating 4
- LTO User Rating 4 Rank
- LTO User Rating 4 Odds
- LTO Speed Rating
- LTO PRC Average
- LTO PRC 1
- LTO PRC 2
- LTO PRC 3

New LTO Fields in Ratings Speed & User Tab.

At the bottom of this screen we have added thirteen new fields for querying LTO user rating ranks, values and clearbys and also LTO speed figure.

Last Time Out Ratings

Last Time Out Speed Rating:

Last Time Out Users Ratings by Rank		Last Time Out Users Ratings by Value		Clear by
User Rating 1:	<input type="text"/>	User Rating 1:	<input type="text"/>	<input type="button" value="Clear"/>
User Rating 2:	<input type="text"/>	User Rating 2:	<input type="text"/>	<input type="button" value="Clear"/>
User Rating 3:	<input type="text"/>	User Rating 3:	<input type="text"/>	<input type="button" value="Clear"/>
User Rating 4:	<input type="text"/>	User Rating 4:	<input type="text"/>	<input type="button" value="Clear"/>

Primarily we added these for those of you using sectional times data from Timeform. This is imported into user rating 4 (the finishing speed %) and user rating 3 (upgrade figure).

Now that you can query the last time out values stored from the sectionals more analysis can be performed.

- i.e. you could look at last time out AW races at class 4 level, which have a class par speed figure of 66. Then enter >66 in the LTO Speed Rating and then experiment with the upgrade and finishing speed figures, say something like >0 for LTO User Rating 3 value field (upgrade figure) and >100 for LTO User Rating 4 value field (fin speed %).

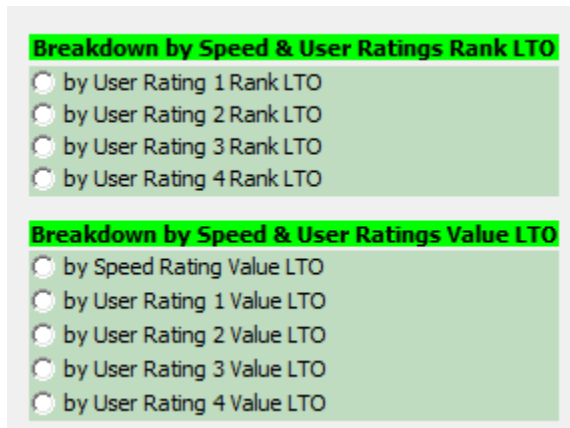
This would show you the bottom line figures for horse who last time out ran in a AW class 4 race and recorded a speed figure above par and also an upgrade better than 0 and a finishing speed better than 100%, so in essence we have found horses who ran in a truly run class 4 AW races producing a better than par figure and an upgrade above 0.

You could do this for all the different classes and race types and find some very neat profitable angles.

All of the Proform Speed Rating class pars can be found at the link [here](#)

New Ratings Presentations

In this software release we have added presentations for LTO User Rating Ranks and Values for all 4 user ratings.



The screenshot shows a software interface with two sections of radio button options. The first section is titled "Breakdown by Speed & User Ratings Rank LTO" and contains four options: "by User Rating 1 Rank LTO", "by User Rating 2 Rank LTO", "by User Rating 3 Rank LTO", and "by User Rating 4 Rank LTO". The second section is titled "Breakdown by Speed & User Ratings Value LTO" and contains five options: "by Speed Rating Value LTO", "by User Rating 1 Value LTO", "by User Rating 2 Value LTO", "by User Rating 3 Value LTO", and "by User Rating 4 Value LTO".

This feature should help when researching your imported ratings and specifically sectional finishing speeds and upgrades in user ratings 4 and 3 if you are using them.

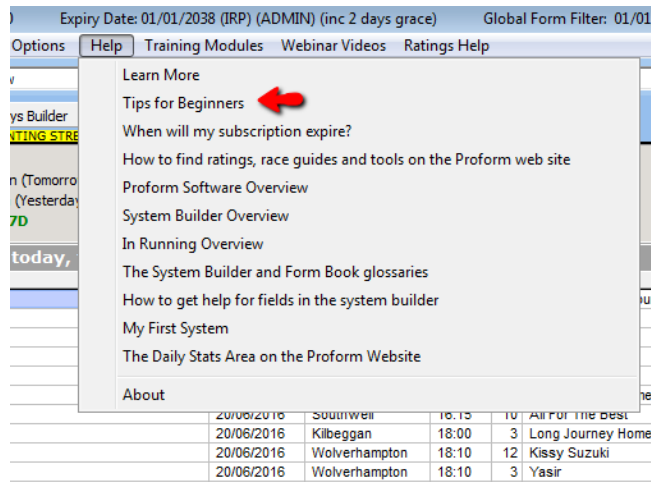
LTO speed rating value presentation


We have also added a LTO speed rating value presentation. This is unrelated to the static speed figures, which you could already present by.

This feature allows you to query the actual speed figure produced last time out regardless of code of racing.

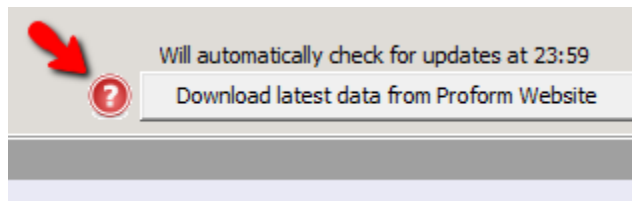
Enhanced Help

In this release, we have added 20 new tips for beginners which you can find under the help menu at the top of the software along with lots of new additional help items.

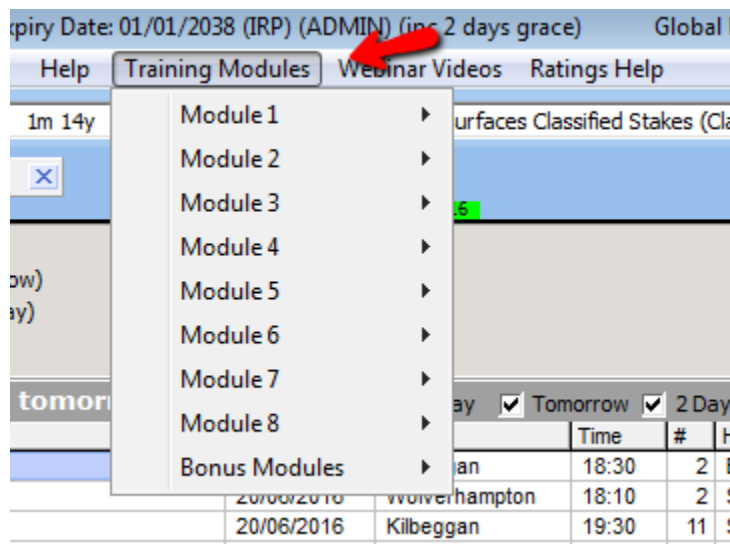


Throughout this release we have added red help question mark icons like this: 

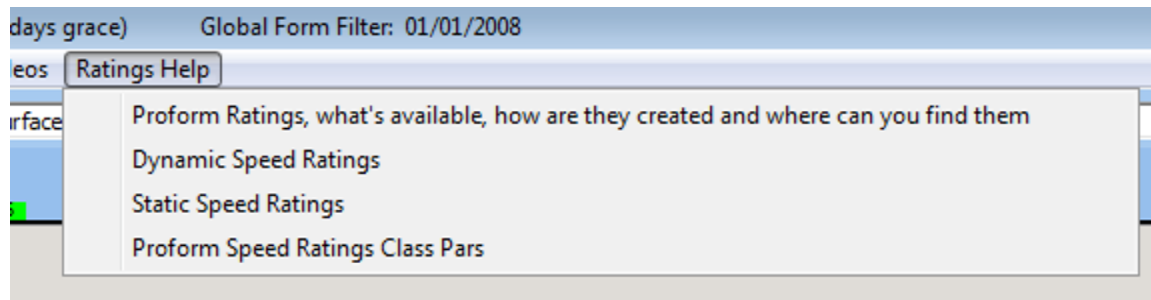
When clicked, you will be directed to the help section of the feature you are currently viewing on our web site. If you hover over icon with your mouse, a tool tip will be displayed to explain what the help icon will display.



There is a new 'Training Modules' menu at the top of the software which contains links to 8 training modules to help you learn all aspects of Proform.



We have also added links to our webinar videos menu which provide additional advice, tricks and tips and there is a new ratings help menu which contains links to additional information about the various ratings in Proform.



New System Builder Summary Fields

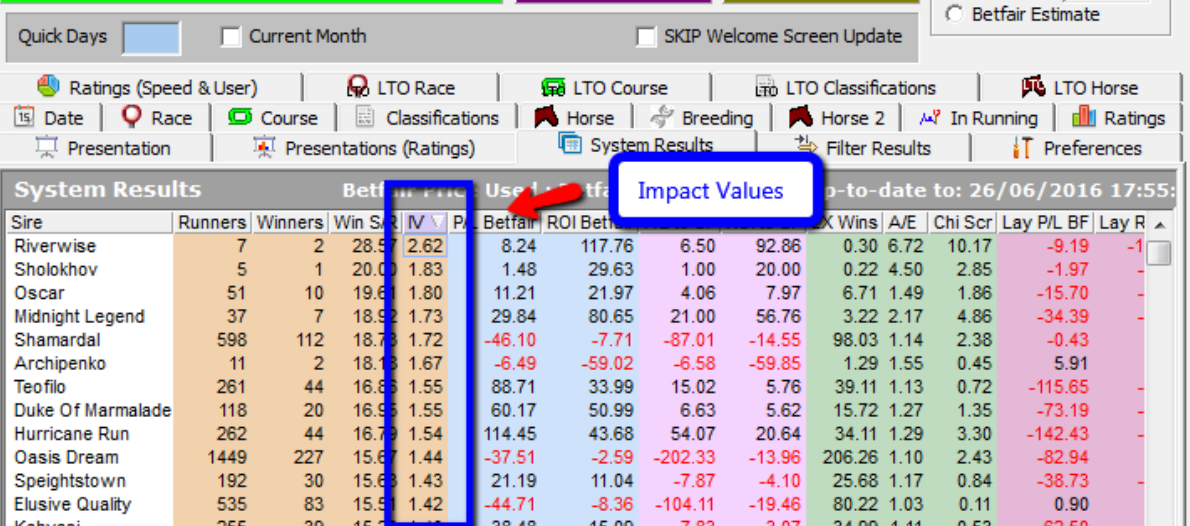
We have added two new fields to the system builder summary screen output.

- No of Races: Details the number of races that summary line covers
- No of Runners: Details the total number of runners in the races the summary line covers.

Impact Value Calculations in System Builder

An impact value (IV) is an index figure calculated by dividing the percentage of winners possessing a particular characteristic (for example, sporting first-time headgear) into the percentage of runners that possess the characteristic.

A value of 1.00 would indicate horses with a particular characteristic win no fewer or no more than those without that characteristic. Below 1.00 is indicative of underperformance, above 1.00 is above expectation.



Quick Days ☐ Current Month ☐ SKIP Welcome Screen Update ☐ Betfair Estimate

Ratings (Speed & User) LTO LTO Race LTO Course LTO LTO Classifications LTO LTO Horse

Date Race Course Classifications Horse Breeding Horse 2 In Running Ratings

Presentation Presentations (Ratings) System Results Filter Results Preferences

System Results Betfair Use Impact Values to-date to: 26/06/2016 17:55:

Sire	Runners	Winners	Win %	IV	P	Betfair	ROI Bet	X Wins	A/E	Chi Scr	Lay P/L BF	Lay R
Riverwise	7	2	28.57	2.62		8.24	117.76	6.50	92.86	0.30	6.72	10.17
Sholokhov	5	1	20.00	1.83		1.48	29.63	1.00	20.00	0.22	4.50	2.85
Oscar	51	10	19.61	1.80		11.21	21.97	4.06	7.97	6.71	1.49	1.86
Midnight Legend	37	7	18.92	1.73		29.84	80.65	21.00	56.76	3.22	2.17	4.86
Shamardal	598	112	18.73	1.72		-46.10	-7.71	-87.01	-14.55	98.03	1.14	2.38
Archipenko	11	2	18.18	1.67		-6.49	-59.02	-6.58	-59.85	1.29	1.55	0.45
Teofilo	261	44	16.86	1.55		88.71	33.99	15.02	5.76	39.11	1.13	0.72
Duke Of Marmalade	118	20	16.95	1.55		60.17	50.99	6.63	5.62	15.72	1.27	1.35
Hurricane Run	262	44	16.79	1.54		114.45	43.68	54.07	20.64	34.11	1.29	3.30
Oasis Dream	1449	227	15.67	1.44		-37.51	-2.59	-202.33	-13.96	206.26	1.10	2.43
Speightstown	192	30	15.63	1.43		21.19	11.04	-7.87	-4.10	25.68	1.17	0.84
Elusive Quality	535	83	15.51	1.42		-44.71	-8.36	-104.11	-19.46	80.22	1.03	0.11
Kahyasi	255	39	15.29	1.41		38.48	15.06	7.83	3.07	34.99	1.11	0.53

In this release, the IV calculations have been altered in that they are now calculated on a line by line basis as follows

- (runs divided by wins) divided by (no of races divided by no of runners in races)

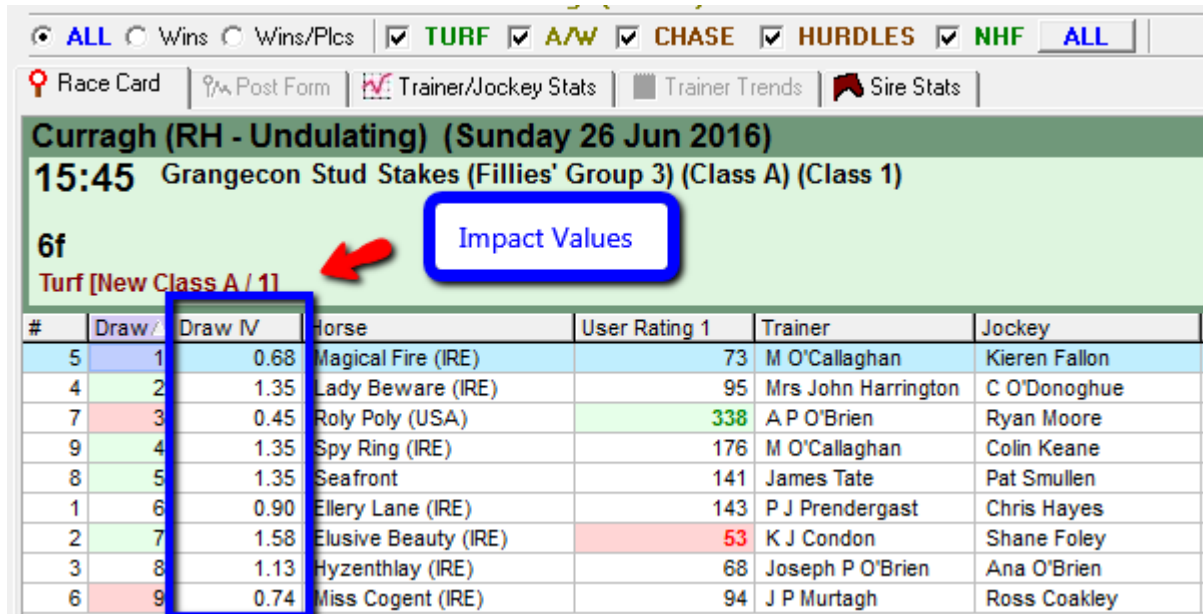
This means an IV can be calculated for any individual line rather than comparing a group of items against each other. Therefore, you can now compare individual items such as a trainer's record with headgear.

Also the place IV and win and place IV are also now recalculated in the same way.

Draw and Pace Stats Impact Calculations

The draw IV's on race cards in Data View, on the draw summary screens and in the race guides now all use the new IV calculation as follows:

- $(\text{runs divided by wins}) \text{ divided by } (\text{no of races divided by no of runners in races})$



#	Draw	Draw IV	Horse	User Rating 1	Trainer	Jockey
5	1	0.68	Magical Fire (IRE)	73	M O'Callaghan	Kieren Fallon
4	2	1.35	Lady Beware (IRE)	95	Mrs John Harrington	C O'Donoghue
7	3	0.45	Roly Poly (USA)	338	A P O'Brien	Ryan Moore
9	4	1.35	Spy Ring (IRE)	176	M O'Callaghan	Colin Keane
8	5	1.35	Seafront	141	James Tate	Pat Smullen
1	6	0.90	Ellery Lane (IRE)	143	P J Prendergast	Chris Hayes
2	7	1.58	Elusive Beauty (IRE)	53	K J Condon	Shane Foley
3	8	1.13	Hyzenthlay (IRE)	68	Joseph P O'Brien	Ana O'Brien
6	9	0.74	Miss Cogent (IRE)	94	J P Murtagh	Ross Coakley

In the draw summary screens any Level Stakes Profit calculation (LSP) is based on Exchange SP rather than Industry SP.

The same logic applies to the course and distance pace stats on the race cards and race guides.

These stats are periodically updated and always updated if a new distance is used at any course. The data is automatically updated during the declaration and results updates.

Data Scope

Below is the scope (time span) of the information within the Proform Database that has been added in this release.

- Owners are complete in entire database
- Sex of horse per run is from 2007 onwards
- Damsires and Damsires breeding country complete from 2001 onwards
- Sires and sires breeding country complete from 2001 onwards
- Dam and dam breeding country complete from 2001 onwards
- Original number of runners complete from 22nd May 2014
- Exact distances from 1st Jan 2009.
- Original number of runners from 22nd May 2014

Exact Distances

In this release, we have added the exact distance of the race in brackets after the distance label on the racecard and results screen.

Position	Draw	Pac	Pace	Pace %	Dist To Winn	Horse	Dist To Next	Spd Rat	Us
1	0	P	6	12.00	0	Munsaab (IRE)	0	74	
2	0	H	6	12.00	9	Boyfromnowhere (IRE)	9	71	
3	0	P	4	8.00	30	Pena Dorada (IRE)	21	65	
4	0	P	4	8.00	34	Urban Gale (IRE)	4	64	

If there are no brackets, then the distance is already the exact distance.

In a future software releases we will be moving to just exact distances in the software but for now in some cases we will show you two distances.

Original Number of Runners

Going: Good (Act: Good)			
Distance PACE Statistics			£3899
Runs	IV	P / L	
09	2.09	£61.02	
72	1.09	£25.99	
20	0.57	£-115.65	
			11 Run (12)
			5yo+
Jockey		Owner	

We have added the original number of runners in brackets next to the number of runner's label on the race cards and results.

This will allow you to determine whether there were non-runners in the race because the two values will be different.

Bug Fixes in Proform Professional v1.9.0

This release addresses the following issues

History Field

The History field on the racecards in the Proform Software and the Race Guides which display C&D, Course (C) and Distance (D) and beaten fav (BF) info was incorrect.

The history field was only displaying the data relevant to any current filters applied so if you were viewing a flat turf race and filtered in the software to a Flat All Weather race the history field only reflected flat All Weather course and distance wins.

To match the same approach adopted by the horse racing industry the software and guides are now unfiltered.

It will show course wins for the same course and type of today's racing and distance wins for wins within +/- 110 yards of today's distance.

Course and distance wins have to be the same course and race type as today.

System Builder fields which contain quotes

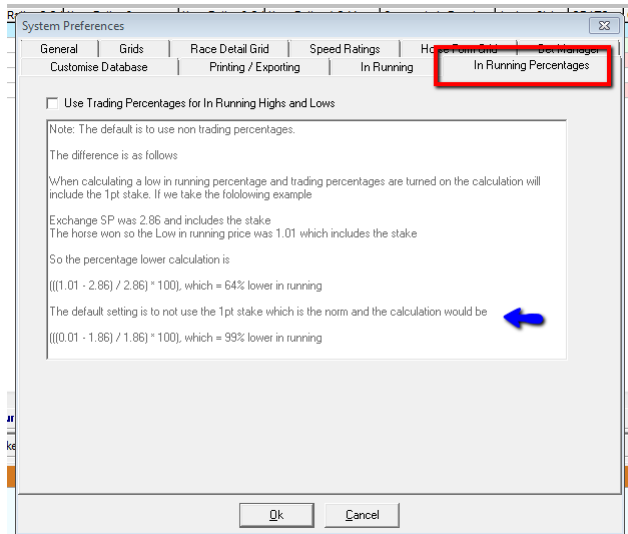
Currently in the Horse, trainer, jockey, trainer LTO, jockey LTO, dam and sire fields if you want to search for an item which contains a quote in the name for example Jonjo O'Neill previously you had to enter two quotes like this Jonjo O''Neill.

In this release, this is now fixed so that you only need to enter one quote and the software takes care of the search.

Note: The upgrade program fixes any saved systems where you had any double quotes in any of the following fields: - Trainer name, jockey name, horse name, trainer name LTO, jockey name LTO, sire name and dam name.

In Running Percentage Calculations

The in running percentage calculations now default to using % higher or lower than BSP including stake. This can be changed in the preferences area of Proform under the In Running Percentages tab.



Main Filters

Fixed an issue that occurred when saving filters that meant some courses were not ticked at the bottom of the course list.

Horse Sex

In the previous release we stored the horse sex alongside the horse's name so we only knew the sex of the horse currently.

The issue was that queries against horse sex could only be performed on a Male or Female basis.

Therefore, we have now added in the horse sex at a race by race level, which means the database is aware of horse sex changes from a colt to a gelding or a filly to a mare.

NOTE: However, the implications of this change can potentially affect any previous sex related queries in the system builder that you have saved so please review any systems which used the sex abbreviations in the horse tab.

Graph View Error

In the previous release, when you tried to untick the graph view when customising tabs in Dataview internal references to each software tabs got out of sync and resulted in a Graph View Error.

To address this problem, we have disabled the ability to tick the graph in the customise tab screen.

You can still reposition the graph tab in the system builder using move it up and down from top tabs to bottom tabs and move the tab position.

Missing Race Classifications

There were a few missing for races such as tattersalls millions races. Now fixed.

Day of the week bug

If you had selected a day of the week on the date tab in system builder, then there was no way of unselecting a day of the week without re-setting the system builder parameters. We have fixed this by adding a blank option in the day of week drop down which when chosen unselects a day of the week.